



Funded by
the European Union

VOŠ
OA
SOUT
Chotěboř

Erasmus+
Latvia
April 2023



Facts about Riga and Latvia

Location

- ▶ Latvia is located in northern part of Europe above Lithuania
- ▶ It's one of the three Baltic states near the Baltic Sea



Riga

- ▶ The capital city of Latvia
- ▶ It has a population of 602,000 people
- ▶ It has an interesting infrastructure
- ▶ It feels like the Czech Republic

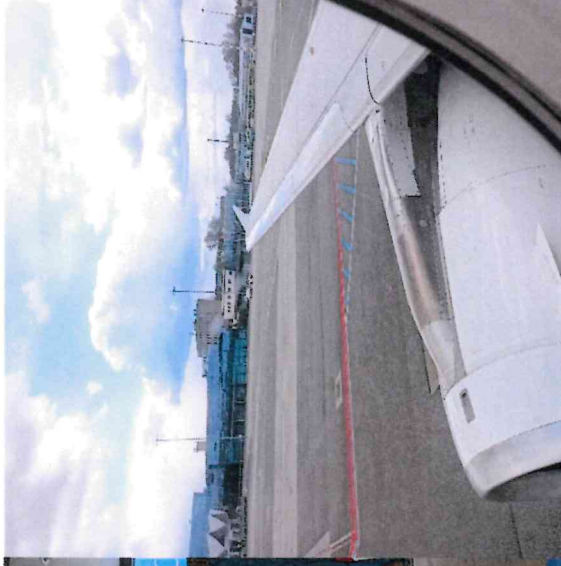




Travelling, Accommodation and Food

Travelling

- **16 April 2023**
Departure from Prague to Riga
- Welcomed by rainy weather in Riga
- Public transport was used in Riga every day
- **28 April 2023**
Departure from Riga to Prague



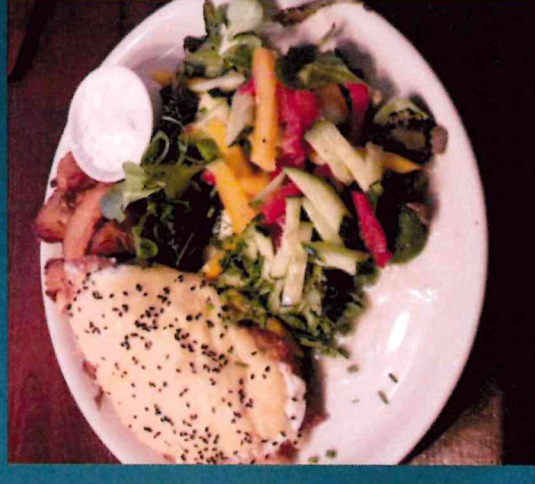
Accommodation


- Dormitory of [RTU](#) (Riga Technical University)
- Flats with 3 bedrooms, a shared kitchen and bathroom
- Dinners usually in a university canteen



Food

- ▶ In contrast to Czechia, less spices are used.
- ▶ White creamy sauce is very popular.
- ▶ Honestly, the food was pretty good.
- ▶ If you like the food in the Czech Republic, you'll like it.
- ▶ The desserts are delicious.





Wood processing industry
and school work experience
in school workshops

AM Furnitúra

- ▶ My work : I watched how someone worked and wrote down the time for how long an operator did the work.



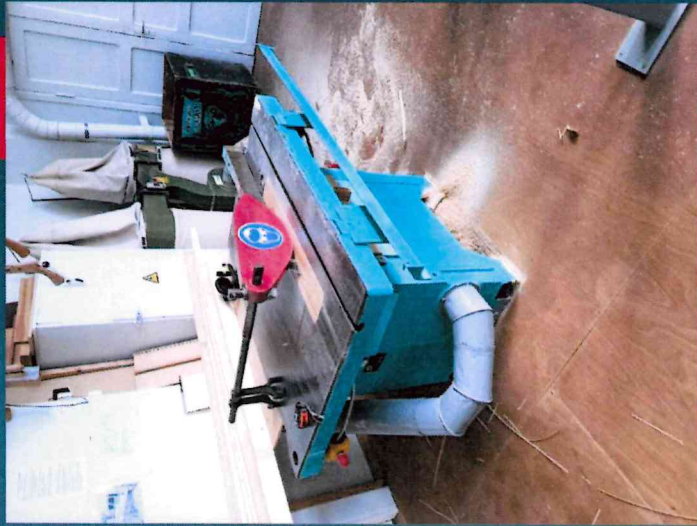
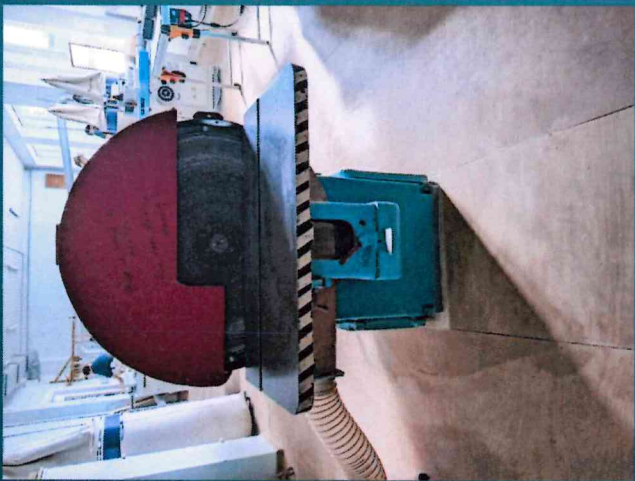
Attending schools in Riga

- ▶ First school: Riga State Technical University, Press Center
 - I sat in on a Latvian class.
- ▶ Second school: Riga Technical college
 - Finally, I had experience work in a workshop.
- ▶ Third school: Technical school of arts and media in Riga
 - Quite interesting. Before I went to technical college in Chotěboř, I had wanted to become an artistic joiner.

First school in Riga



2nd school



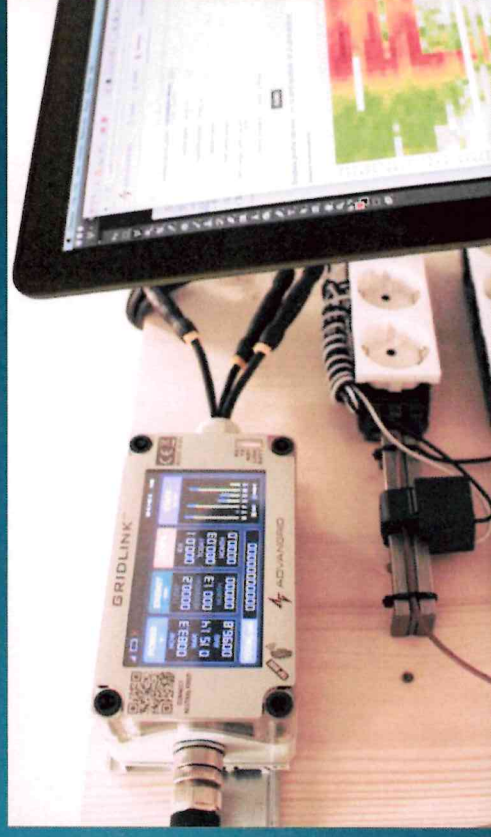
3rd school



AdvanGrid

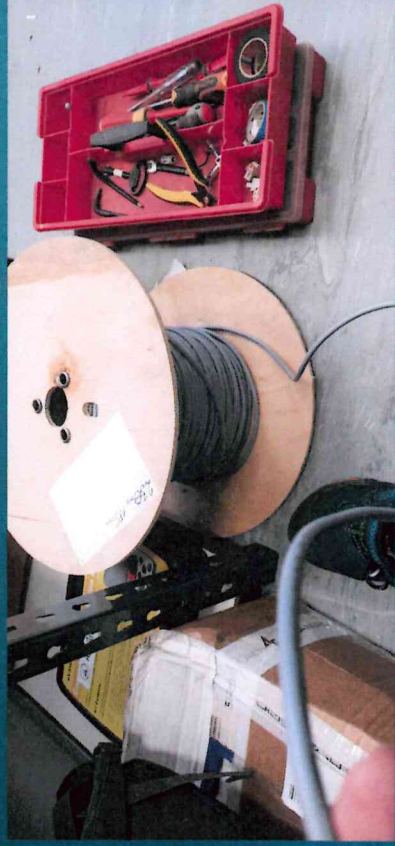


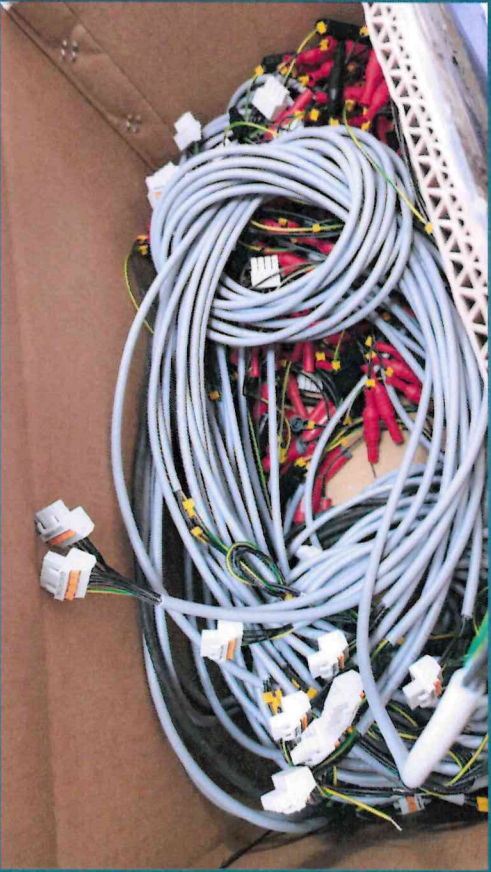
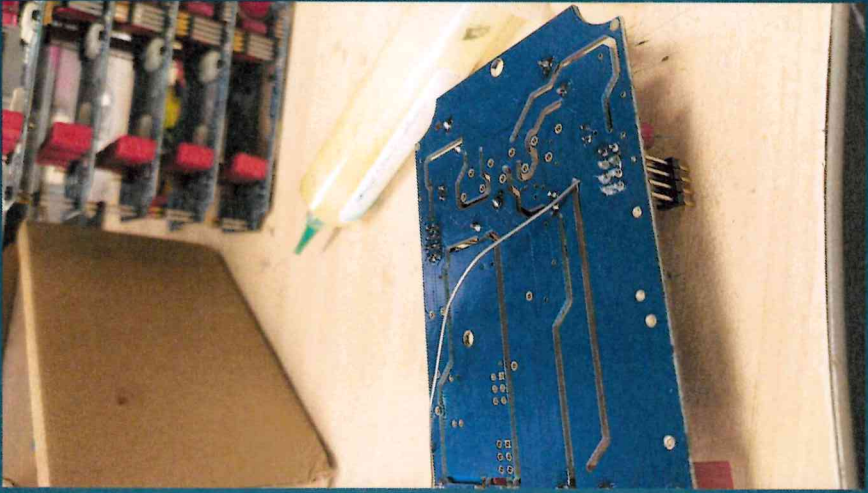
- ▶ Small modern Latvian electronic company
- ▶ Measuring of consumed energy in industrial companies or even some small local companies are the main goals of AdvanGrid
- ▶ Beside that they track CO₂ emissions



My work

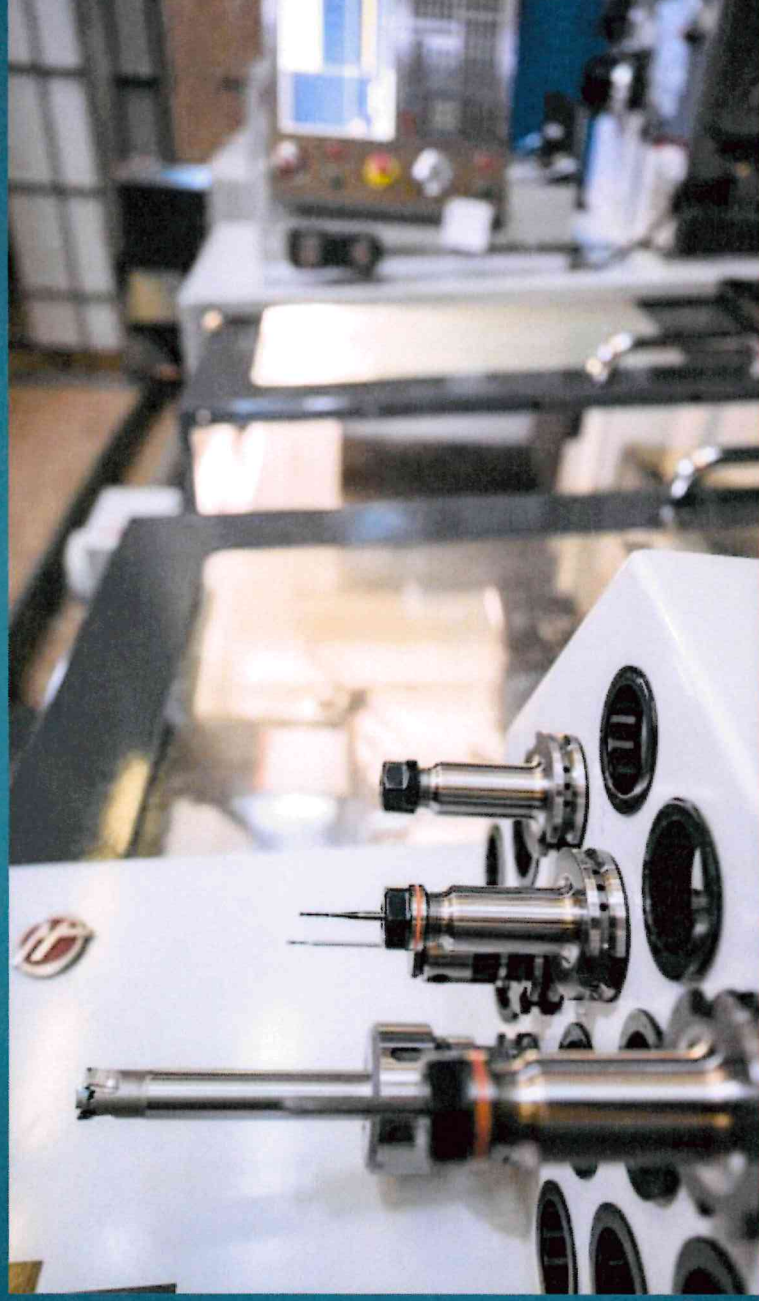
▶ Cable soldering





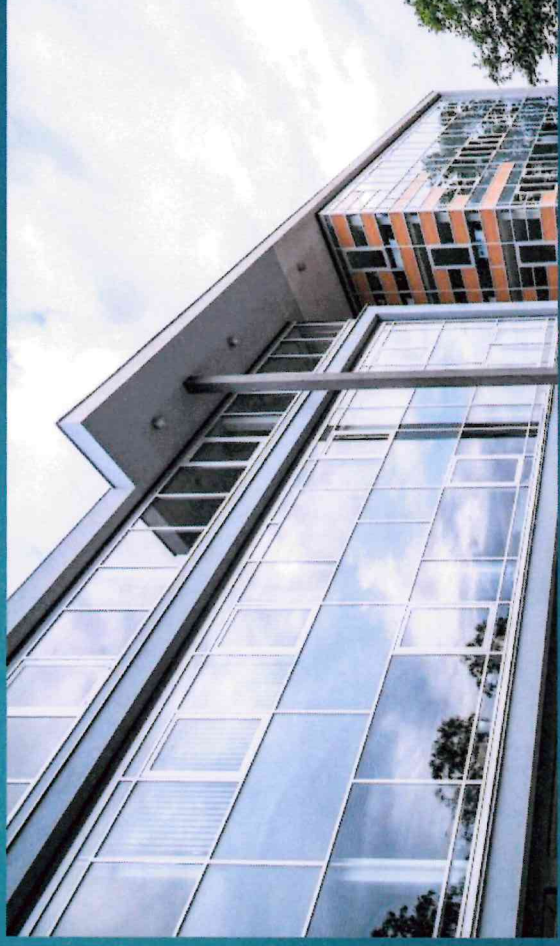
My work

HansaMatrix



Overview

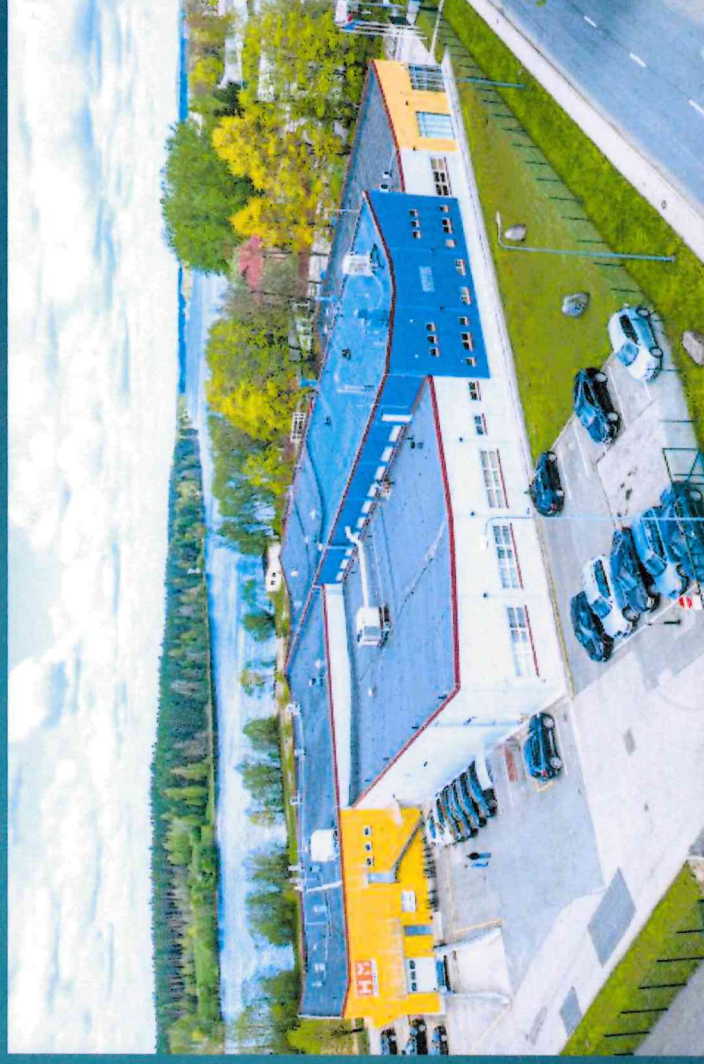
- ▶ HansaMatrix provides electronics manufacturing services and prepares the production processes for customer-developed products
- ▶ HansaMatrix was established in 1999



HansaMatrix
headquarters

HansaMatrix units

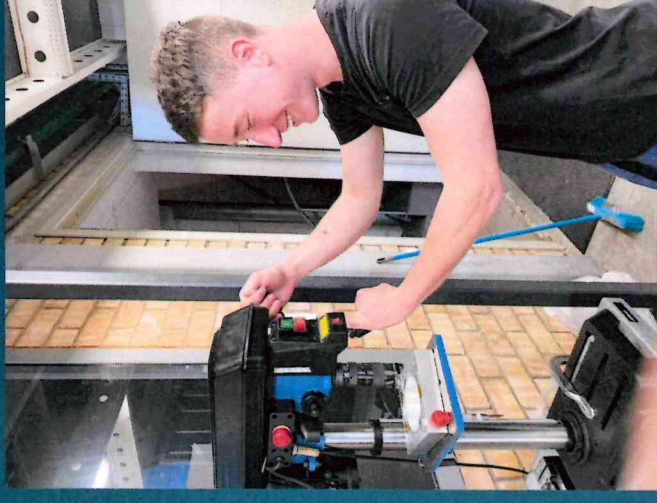
- ▶ HansaMatrix headquarters
- ▶ HM Marupe
- ▶ HM Ogre
- ▶ HM Ventspils



HM Ogre

Our work

- ▶ Cutting of steel rods
- ▶ Cable preparation for assembly
- ▶ Assembling of wi-fi amplifiers



Wiseberg Technology

- ▶ PCB (Printed Circuit Board) design
- ▶ PCB programming and testing
- ▶ Creating of prototypes
- ▶ Wire crimping



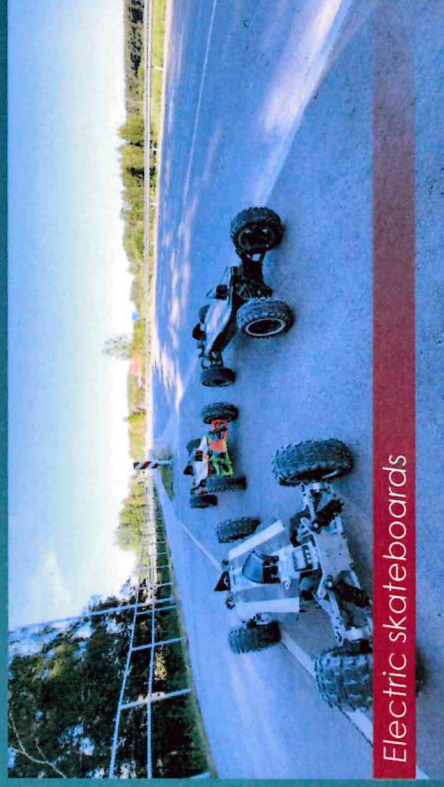
Our Work

- ▶ Soldering
- ▶ Attaching stickers
- ▶ Stocktaking





- ▶ Start-up
- ▶ The company has three employees
- ▶ They make cargo scooters and electric skateboards

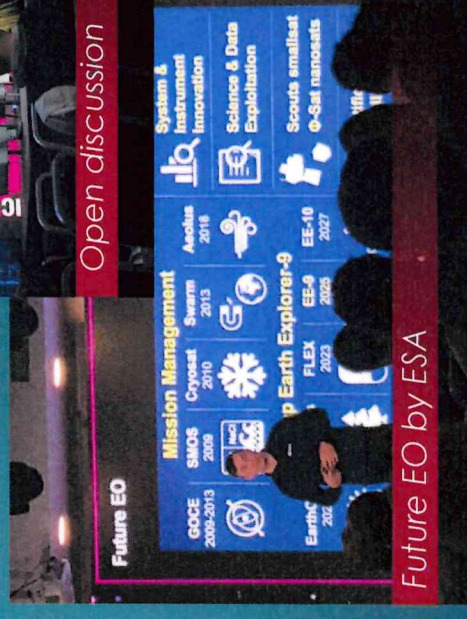


Our Work

- ▶ In Bruntor, we mainly conducted market research in Europe.
- ▶ Gathering information on companies within a given country: salaries, number of employees, etc.
- ▶ Visiting conferences: Deeptech atelier and Fantodroms



Open discussion



*1EO – Earth Observation

*2ESA – European Space Agency



KRONOSPAN
RIGA

- ▶ **Kronospan** is an Austrian-founded, Cyprus-based, multinational company that manufactures and distributes wood-based panels which are used in applications including flooring, furniture and timber-framed houses.



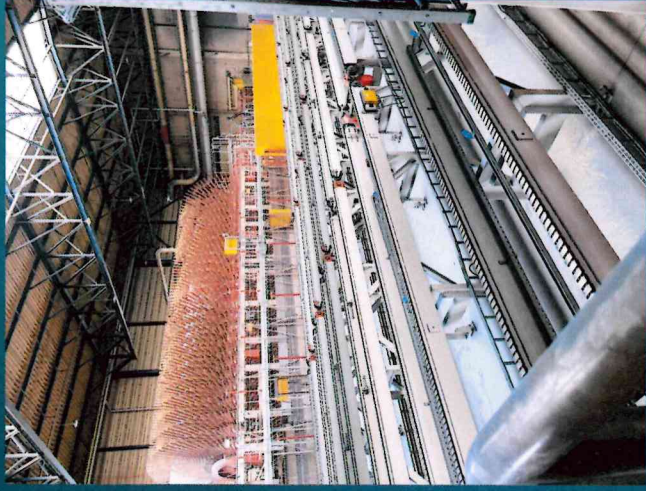
PSB line in Kronospan-Riga



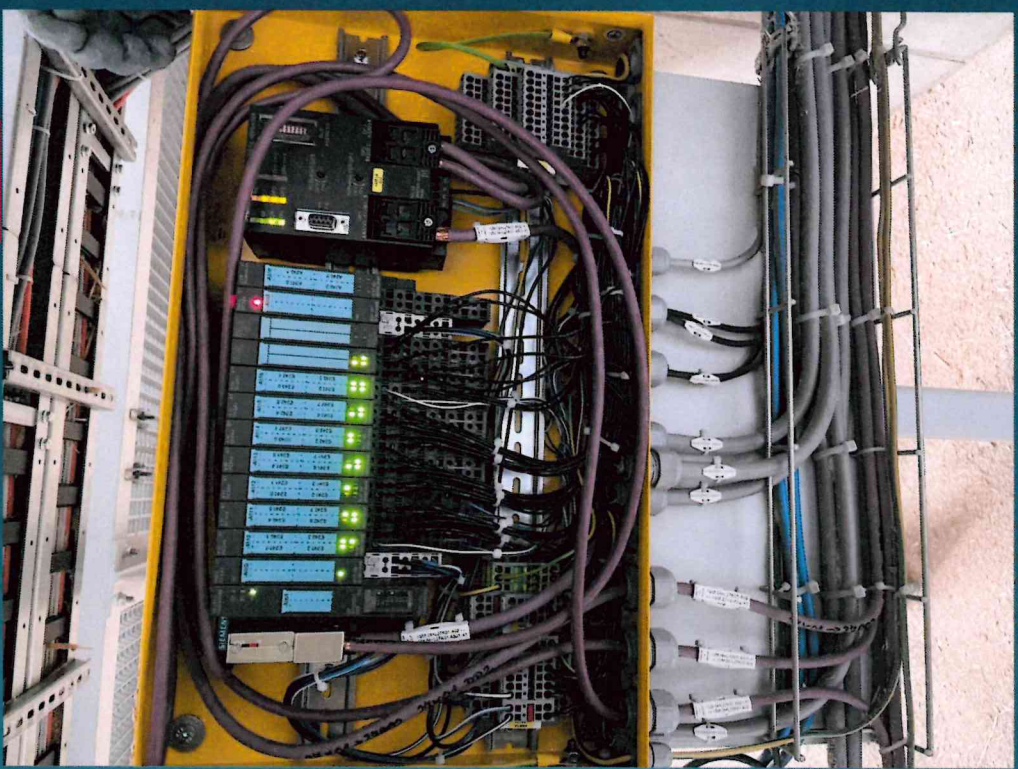
Our Work

- ▶ Cleaning and checking electric cabinets in the OSB department of the factory
- ▶ Ancillary works on an assembly line of electric motors
- ▶ Installation of buttons in electric cabinets

Manufacturing line of OSB



Instalation of buttons

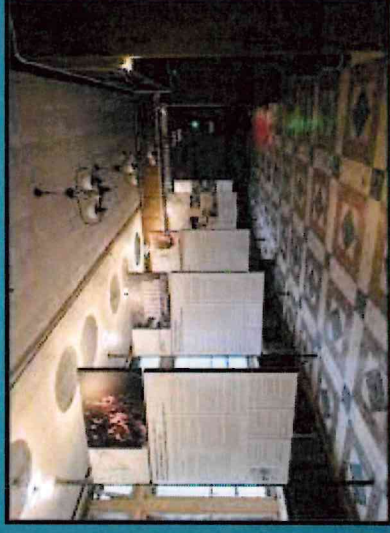




FUN, WEEKEND TRIPS AND FREE TIME ACTIVITIES

KGB Museum

- ▶ The Corner House is a historic building in the city center of Riga, Latvia.
- ▶ It was known as the headquarters of the Soviet KGB in Latvia from 1940 to 1941 and from 1944 to 1991.



Execution wall

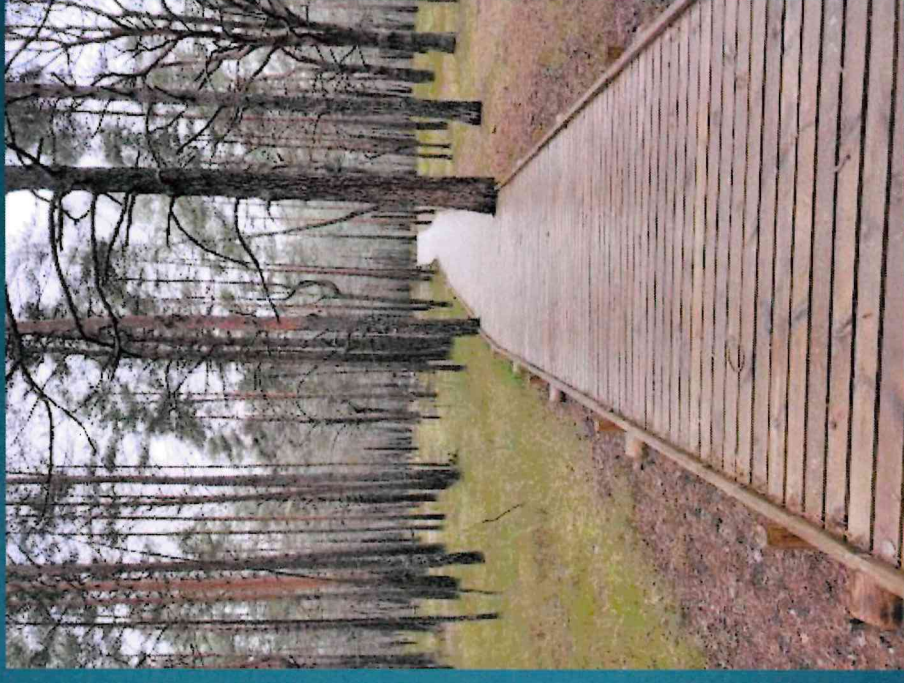
Jurmala

- ▶ Jūrmala is a resort town in Latvia, about 25 kilometres (16 miles) west of Riga.
- ▶ Jūrmala is 32 km (20 miles) long and sandwiched between the Gulf of Riga and the Lielupe River.



Vacaku beach

- ▶ Vecāki Beach is one of the most beautiful and popular beaches in Riga.
- ▶ It is located by the Baltic Sea and is about 3 kilometers long.
- ▶ Many Soviet-era bunkers are located in this area.





Project Key Take-aways

TEAMWORK

RESPONSIBILITY
FOR JOB DONE

RELIABILITY
AT WORK

CONFIDENCE

FOREIGN CAPITAL
CITY EXPERIENCE

COURAGE TO
TALK IN FRONT OF
OTHER PEOPLE

INDEPENDENCE